



RELEASE NOTES

info@promine.com



Release Notes 2022.13

This document contains the descriptions of new commands and improvements that are included in the **2022.13** version of Promine. These are valid from the release of the version the **October 19, 2022**.

Copyright

© 2021 Promine Inc. All rights reserved. It is strictly prohibited to copy, distribute or otherwise deal with this document except in accordance with the Promine End User License Agreement.

Table of Contents

New features.....	2
Module: Filer.....	2
FILEX – Export convention into XML format.....	2
Improvements.....	4
Module: Drill/blast Underground	4
DRILH – Load holes.....	4
DRIER – Erase report.....	5
Module: Rock Mech.....	5
RKMRMR – Calculate RMR.....	5
Module: Diamond Drill Holes	6
DDHCHE – Edit Channel.....	6
Module: Live Survey.....	6
LSVSEC – Measure section.....	6

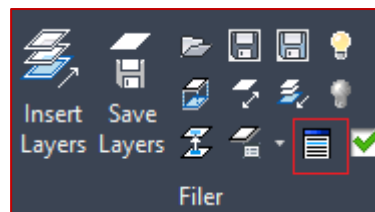
New features

Module: Filer

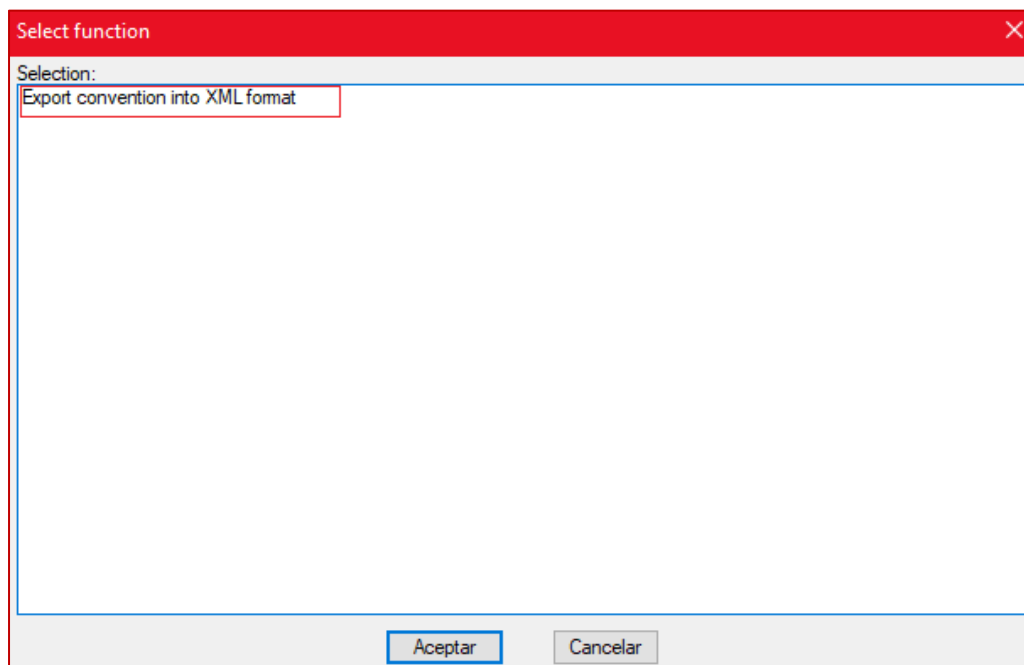
FILEX – Export convention into XML format

This new improvement has been created in the Filer module so the user can export the current convention into an XML file in order to use Promine conventions data outside of Promine.

The location of this command is inside of the customized commands in the module filer.



By the moment it is the only command in the list.



The result of the XML file exported will be the following

```
<?xml version="1.0"?>
- <PromineConvention Name="NEW" xmlns:xsi="http://www.w3.org/2001/XMLSchema-instance" xmlns:xsd="http://www.w3.org/2001/XMLSchema">
  - <LayerGroups>
    <LayerGroup Name="All" Id="Z"/>
    <LayerGroup Name="Survey" Id="S"/>
  </LayerGroups>
  - <Departments>
    <Department Name="Geology" Id="G"/>
    <Department Name="Planning" Id="P"/>
    <Department Name="Survey" Id="S"/>
    <Department Name="Visitor" Id="V"/>
  </Departments>
  - <Drawers>
    <Drawer Name="Hola" Tag="H">
      <Directory>C:\Users\ASUS\Documents\</Directory>
      <FolderStructureId>Hola</FolderStructureId>
    </Drawer>
  </Drawers>
  - <FolderStructures>
    <FolderStructure Id="Chao">
      <SubFolder Name="Layer" Tag="L">
        <FolderStructureId>Layer</FolderStructureId>
      </SubFolder>
    </FolderStructure>
    <FolderStructure Id="Hola">
      <SubFolder Name="Chao" Tag="C">
        <FolderStructureId>Chao</FolderStructureId>
      </SubFolder>
    </FolderStructure>
    <FolderStructure Id="Layer">
      <Layer Name="A" Tag="A">
        <Color Web="#000000" ColorIndex="18"/>
        <DepartmentRights>
          <DepartmentRight Id="G" Write="true" Read="true"/>
          <DepartmentRight Id="P" Write="true" Read="true"/>
          <DepartmentRight Id="S" Write="true" Read="true"/>
          <DepartmentRight Id="V" Write="true" Read="true"/>
        </DepartmentRights>
        <LayerGroupMembership/>
        <LineWeight>0</LineWeight>
        <Plot>true</Plot>
        <LineType>Continuous</LineType>
      </Layer>
    </FolderStructure>
  </FolderStructures>
  - <Users>
```

Improvements

Module: Drill/blast Underground

DRILH – Load holes

For this new improvement a diagram was created for the user to visualize the hole charge before inserting the load in the hole.

Load holes:

Diameter:

Collar

Collar length:

Stemming:

Plug

☐ Plug

☐ Use length of plugs

Plug (m):

☒ Stage explosives

Explosive length:

Max explosive length:

Stemming length:

Explosive

Explosive:

Bottom load

☒ Insert first bottom load

Explosive:

Length:

Second bottom load

☐ Insert second bottom load

Explosive:

Length:

Boosters

☒ Use boosters

Booster position:

Booster position:

Booster position:

Booster position:

Booster position:

Used Booster:

Default length:

As can be seen in the drawing above the diagram shows the load, bottom load, the stemming and also the boosters.

The default length can be set in the Options of the module (DRIPREF). Promine is going to take the Depth as the Default length of the holes.

Options - Drill-Blast Underground

Drilling

Default option

Distance from ref. line

Parallel

Distribute

Fan

Manual

Follow

From hole collar

From pivot point

Text

General text height

Text height - view direction

Text height - project collar/bottom

Breakthrough tolerance:

Spacing (Radius of cursor):

Overdrilling:

Depth:

Cost of drilling/length

Cost of loading/length

Colour for the drilling functions

Colour...

Color for mark hole in plan

Breakthrough color

No breakthrough color

Annotate hole

Annotate hole

Style

Measure rod from pivot point

Show hole number while projecting in plan

Keep snap mode during manipulations

Show the number of plugs in the summary report

Enable radius edition when inserting holes

Use vertical axis for dump angle (DRIAS)

Conversion factor for length:

Annotate West as:

Section dip decimals:

Round the value of the section dip

Customize reports...

Drills...

Diameters...

Explosives...

Raises...

Save as...

Load...

Aceptar

Cancelar

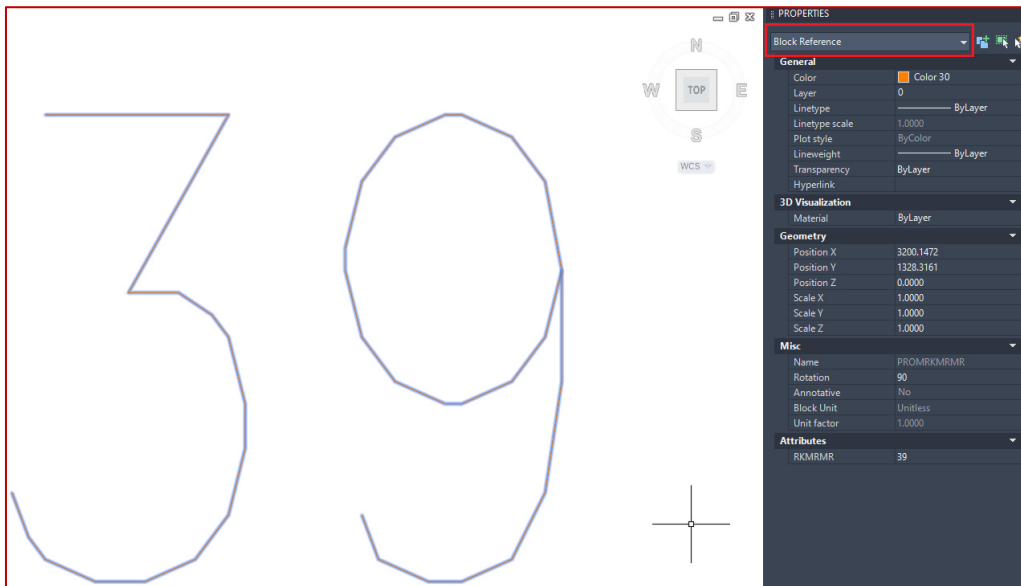
DRIER – Erase report

The command DRIER can now erase the stope reports. This command was available before just for the reports inserted with the « Insert Report » command.

Module: Rock Mech

RKMRMR – Calculate RMR

With this new improvement now the RKMRMR command insert a block with attributes instead of a point so it can be edited in a better way.



Module: Diamond Drill Holes

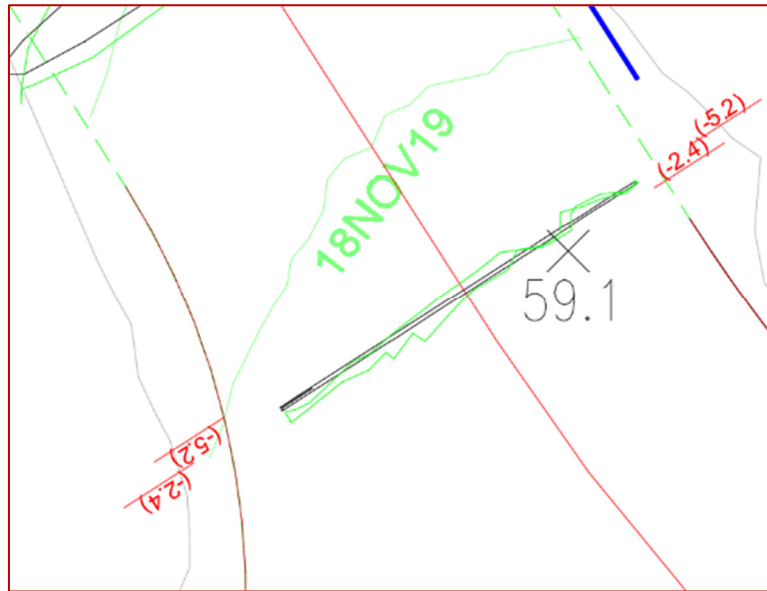
DDHCHE – Edit Channel

For this new improvement in the Diamond Drill Holes module now is possible to edit old channels that have been made with a 2000 version of Promine as well as new. New xdata will be added to the channel when DDHCHE is used on those channels for the first time so that those channels can be edited just like new channels.

Module: Live Survey

LSVSEC – Measure section

For this new improvement the annotations of floor and back done by the section command can be attached to the wall and an offset from the wall can be configured.



To use the annotation, it must be activated through the options, the desired offset is configured from the same panel. The layer suffix of the wall will be use to find the walls surrounding the section, it needs to be as precise as possible since it will pick the first layer found.

Options (Default.config)

File

General General 2 Prism Management Drawing Folders Layer Management Blocks Management

Drift Dimensions
 Default drift width (m): + - 4.00 Default drift height (m): + - 4.00

Section Survey
 Section tolerance end distance (m): + - 0.30
☐ Show section breaks
 Over break color: ■ Under break color: ■
 Distance for center lines transfer to mark face + - 0.50

☒ Annotate on planned wall Offset + - 0.50
 Section wall annotation suffix MURS

Mark Face
 Default marking height (m): + - 1.50