



RELEASE NOTES

info@promine.com



► **Release Notes 2023.05**

This document contains the descriptions of new commands and improvements that are included in the **2023.05** version of Promine. These are valid from the release of the version the **May 2, 2023**.

Copyright

© 2021 Promine Inc. All rights reserved. It is strictly prohibited to copy, distribute or otherwise deal with this document except in accordance with the Promine End User License Agreement.

Table of Contents

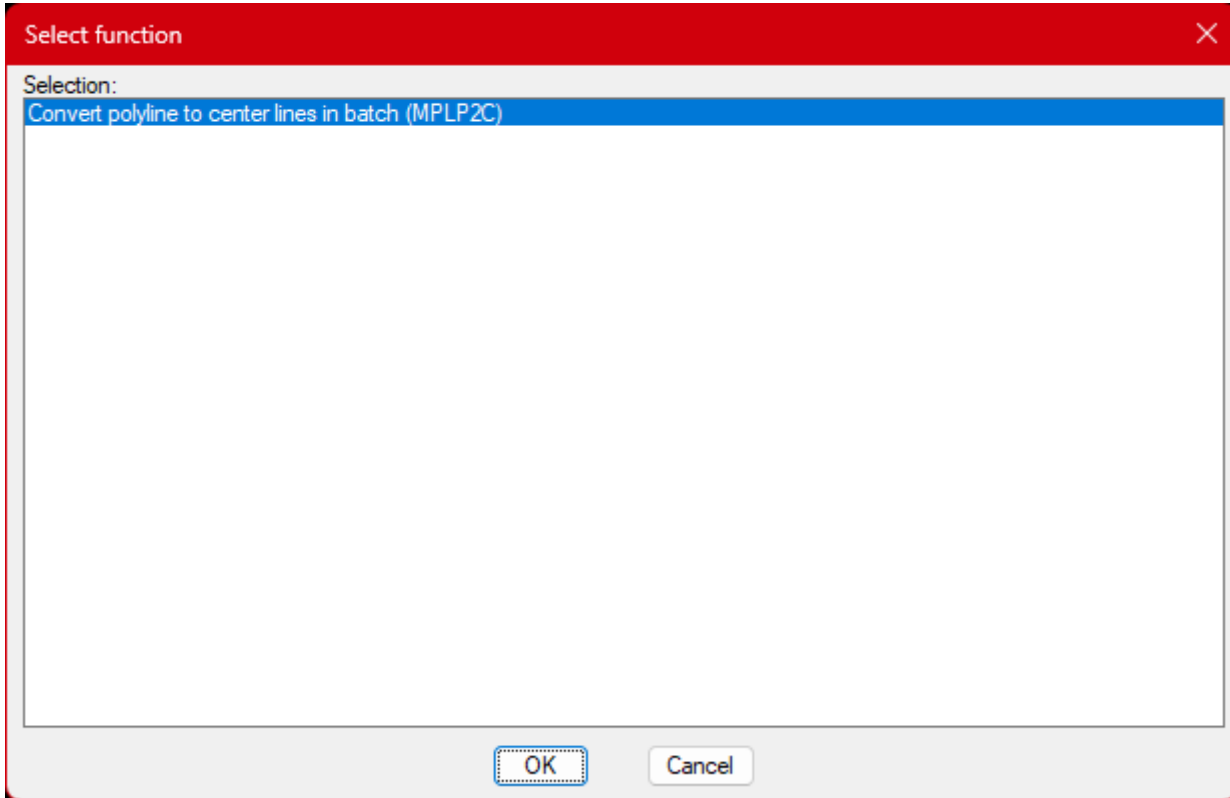
New Feature	2
Module: Mine Planning	2
MPLCU – Custom commands.....	2
ProVIZ	5
Uploader.....	5
Server Transfer	6
Improvements	8
Module: Face Mapping	8
FMPL – Custom Polylines.....	8
ProVIZ	8
Mesh Creation.....	8

New Feature

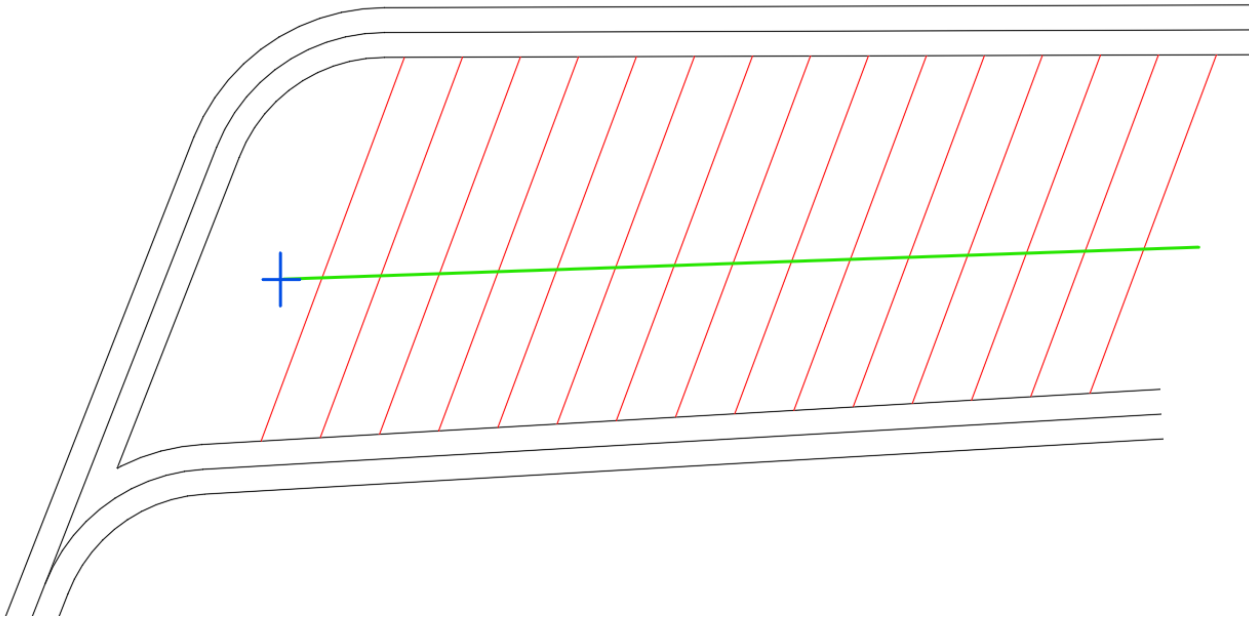
Module: Mine Planning

MPLCU – Custom commands

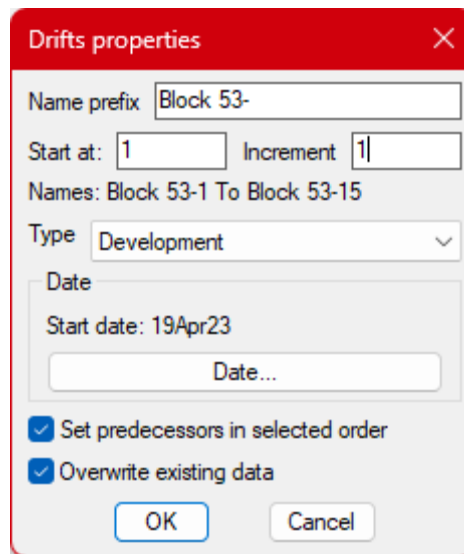
A new command was added to the custom commands of the module. The command converts polylines to mine planning centerlines in batch. This can be useful if a drawing has been done in AutoCAD before Promine has been used. The shortcut for the command is MPLP2C (Polyline to Center line).



The command will start by asking to draw a selection fence through the polylines that should be convert. The direction of the fence is in the direction the predecessors are going to be linked. Of course, the earlier polylines need to be crossed by the fence first. In the image below, the slices are represented in red, and the fence is starting at the blue marker and going across all the polylines to convert.



Once the polylines are selected, the program will display the following dialog box:



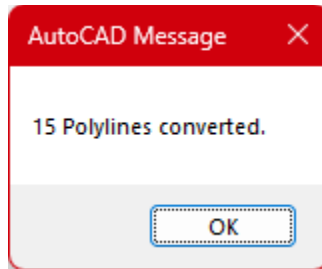
Here it is possible to set the names to use for the center lines with the starting number and increment. In the above example, the names will start with the prefix "Block 53-" and are going to be numbered from 1 until 15 by step of 1 (Block 53-1, Block 53-2, Block 53-3, etc.).

The type of drift can be set as well as the start date of the first center line selected.

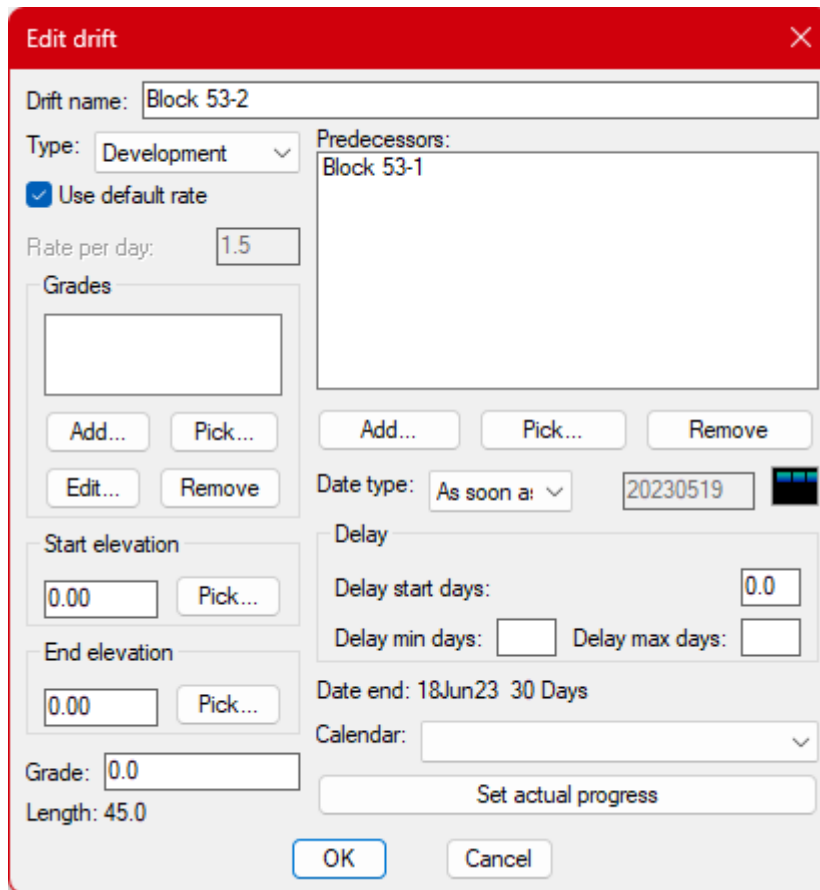
If the toggle "Set predecessors in selected order" is selected, the program will make each center line the predecessor of the previous one and start date will be set to "As soon as possible". If not, all center lines will be independent.

If the toggle "Overwrite existing data" is selected, any data existing in the center lines selected will be overwritten. Any center line with existing data will not be modified if this toggle is disabled.

In the case where the name to use is already in use in the drawing, the program will issue a warning about it. Once the process is completed, a message will appear, displaying the number of polylines which were converted to center lines:



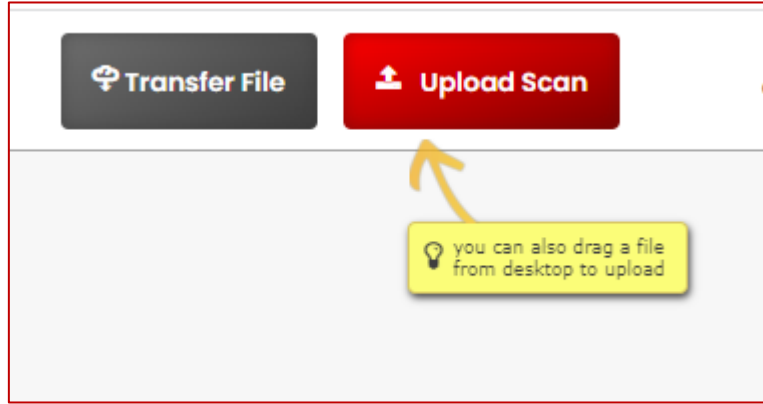
By using the edit command on the converted polylines, you will then see the properties adjusted according to the selection made:



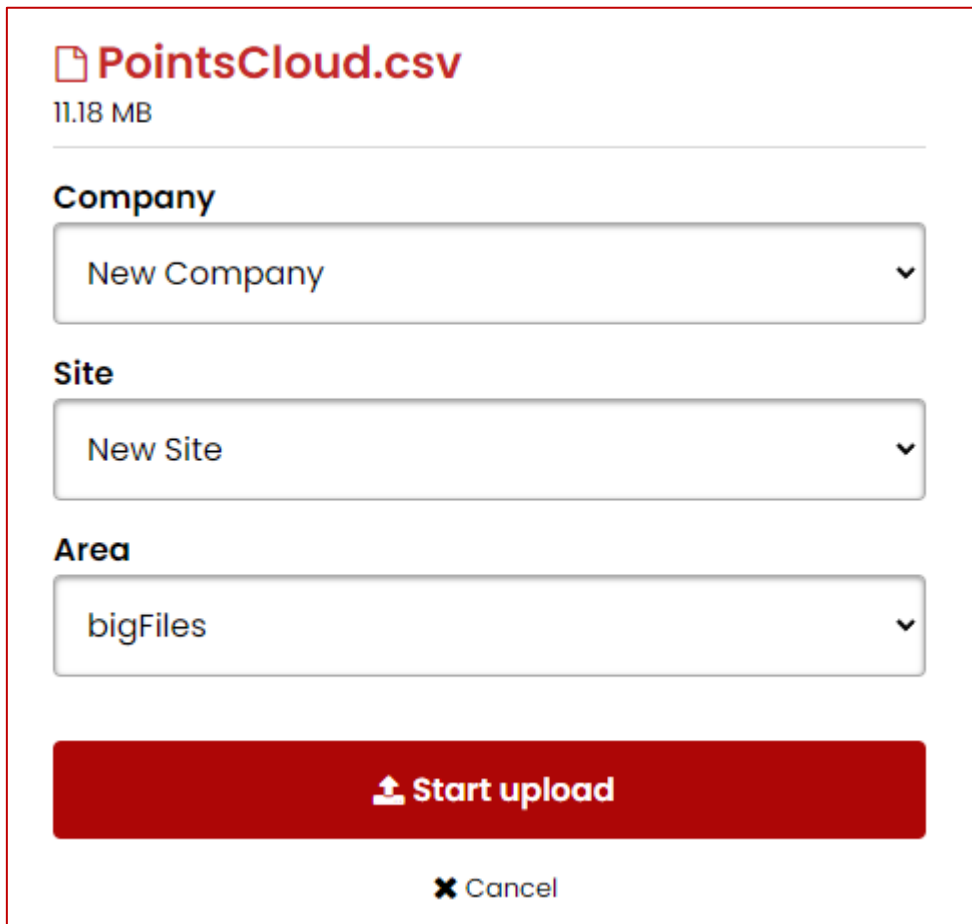
ProVIZ

Uploader

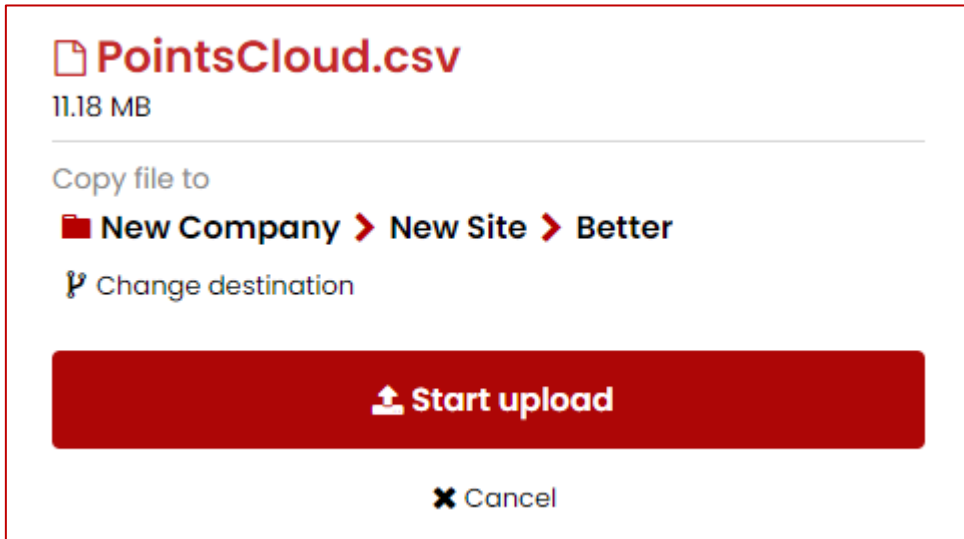
It is now possible to Upload Scans from any page in ProVIZ. This can be done by clicking the Upload Scan button in the header or by dragging and dropping a file onto the page.



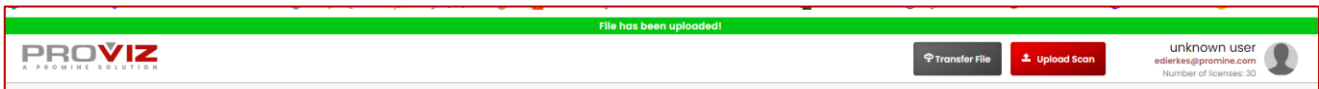
After the file has been selected it is possible to determine the destination of the file.

A screenshot of a file upload destination selection dialog. At the top, it shows a file icon, the filename 'PointsCloud.csv', and the size '11.18 MB'. Below this are three dropdown menus: 'Company' with 'New Company' selected, 'Site' with 'New Site' selected, and 'Area' with 'bigFiles' selected. At the bottom, there is a large red 'Start upload' button with an upload icon and a smaller 'Cancel' button with an 'X' icon.

If the current page is already an Area this will be the default upload path, but the destination can be changed.

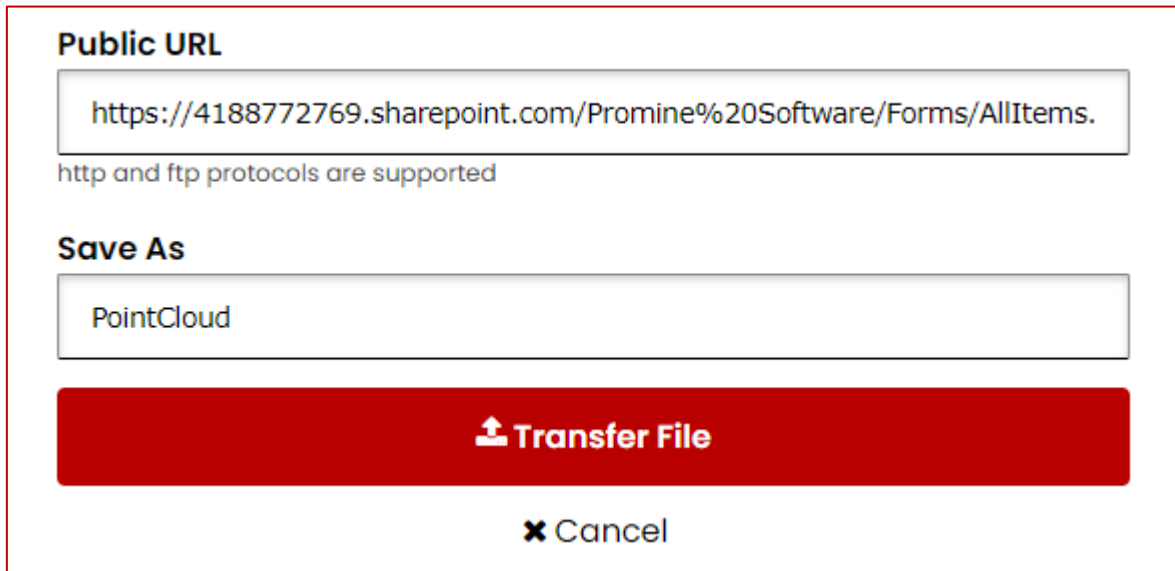


While the file uploads a loading bar is shown at the top, when it is finished the bar will be green and a sound will be played.



Server Transfer

It is now possible to upload scans directly from another server. If a file has been shared via file sharing service, it is possible to just paste the link into the transfer window.





Transfer has been started

Your file being downloaded, it will appear in your storage space in couple minutes

Okay

Improvements

Module: Face Mapping

FMPL – Custom Polylines

It is now possible to add a destination layer to polylines created with FMPL. The structures create with FMPDE are put on the same layer than the polyline they are created on.

ProVIZ

Mesh Creation

It is now possible to open multiple scans at the same time and generate a single mesh from them. If the mesh is supposed to be closed the points can not be separated too far from each other.

