



RELEASE NOTES

info@promine.com



▶ **Release Notes 2023.06/07**

This document contains the descriptions of new commands and improvements that are included in the **2023.06/07** version of Promine. These are valid from the release of the version the **June 12, 2023**.

Copyright

© 2021 Promine Inc. All rights reserved. It is strictly prohibited to copy, distribute or otherwise deal with this document except in accordance with the Promine End User License Agreement.

Table of Contents

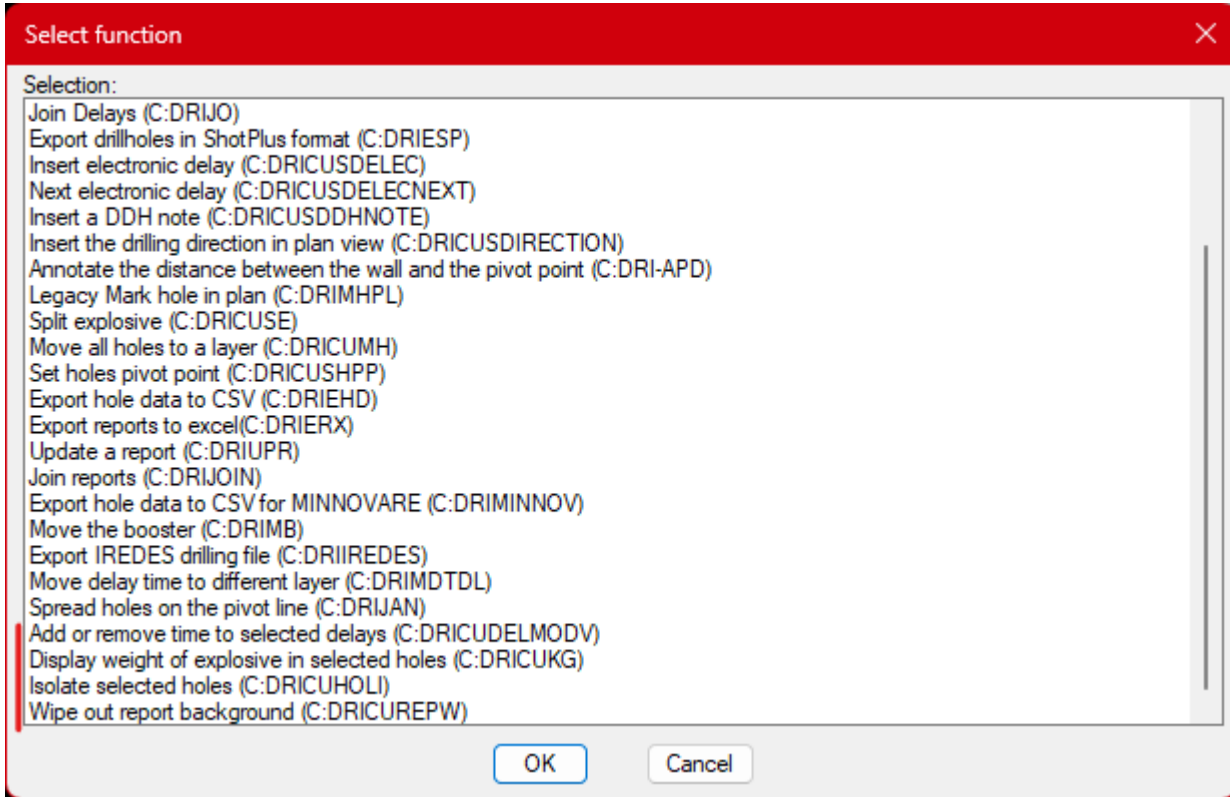
New Feature	2
Module: Drilling and Blasting Underground.....	2
DRICU – Custom commands.....	2
Module: Mine Planning	3
MPLR – Reports.....	3
Improvements.....	6
Module: Mine Planning	6
MPLR – Reports.....	6
Rock Mechanics.....	6
RKMRMR/ RKMQ – RMR and Q value.....	6

New Feature

Module: Drilling and Blasting Underground

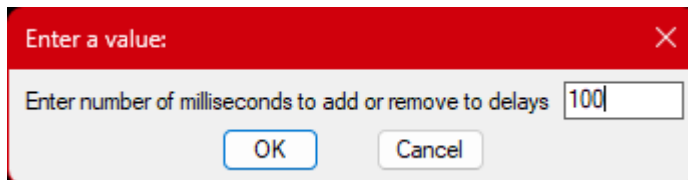
DRICU – Custom commands

4 new custom commands have been added.



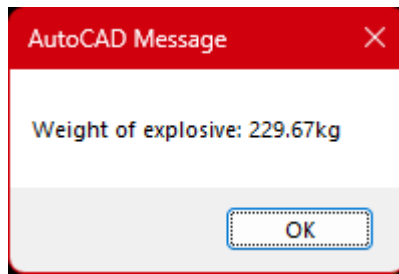
Add or remove time to selected delays (DRICUDELMDV)

Select delays and then set how many milliseconds to add or remove to the current delay time:



Display weight of explosive in selected hole (DRICUKG)

Select the hole collars created by the Mark Hole in Plan (DRIMHP) command. On this is done, it will display the total weight of explosive of the holes selected:



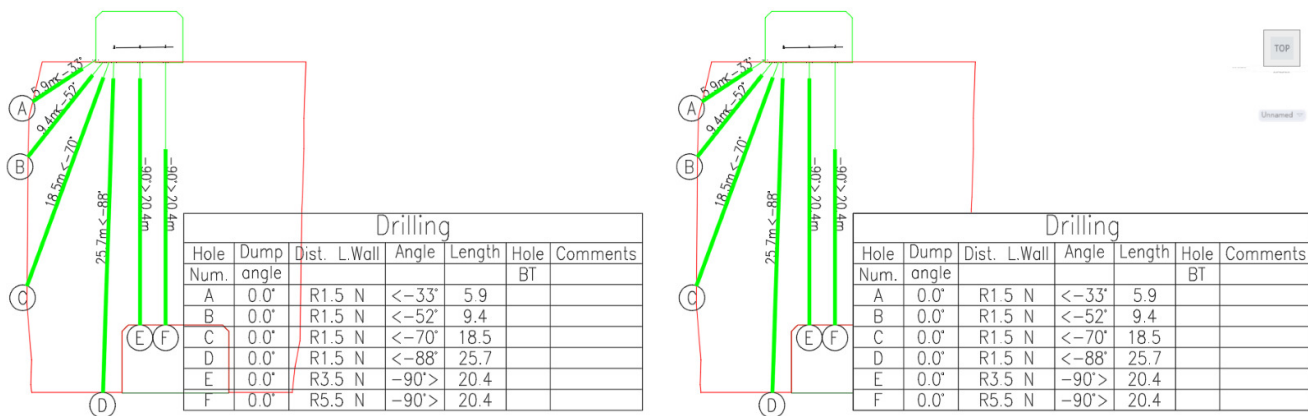
Isolate selected holes (DRICUHOLI)

The program will display only the holes which are not loaded. Note that this will only use unloaded holes. To come back to the previous visibility, use the UNISOLATE command.

Wipe out report background (DRICUREPW)

This command will hide anything which is superposed to a report. Objects are not erased but only hidden behind a wipeout object. Move the report to erase the wipeout object if needed. It applies it to all reports on the current layer.

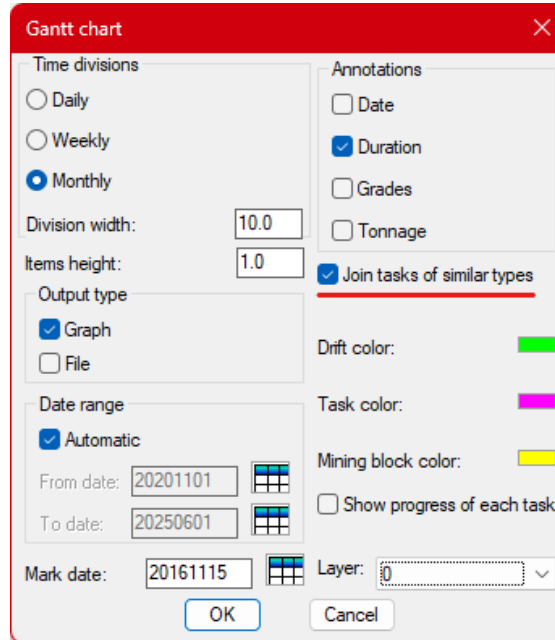
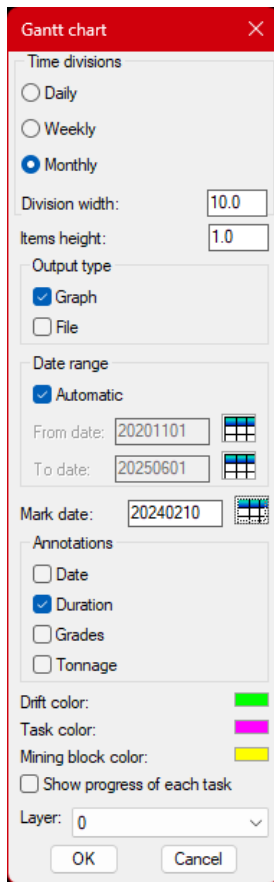
Before and after the command:



Module: Mine Planning

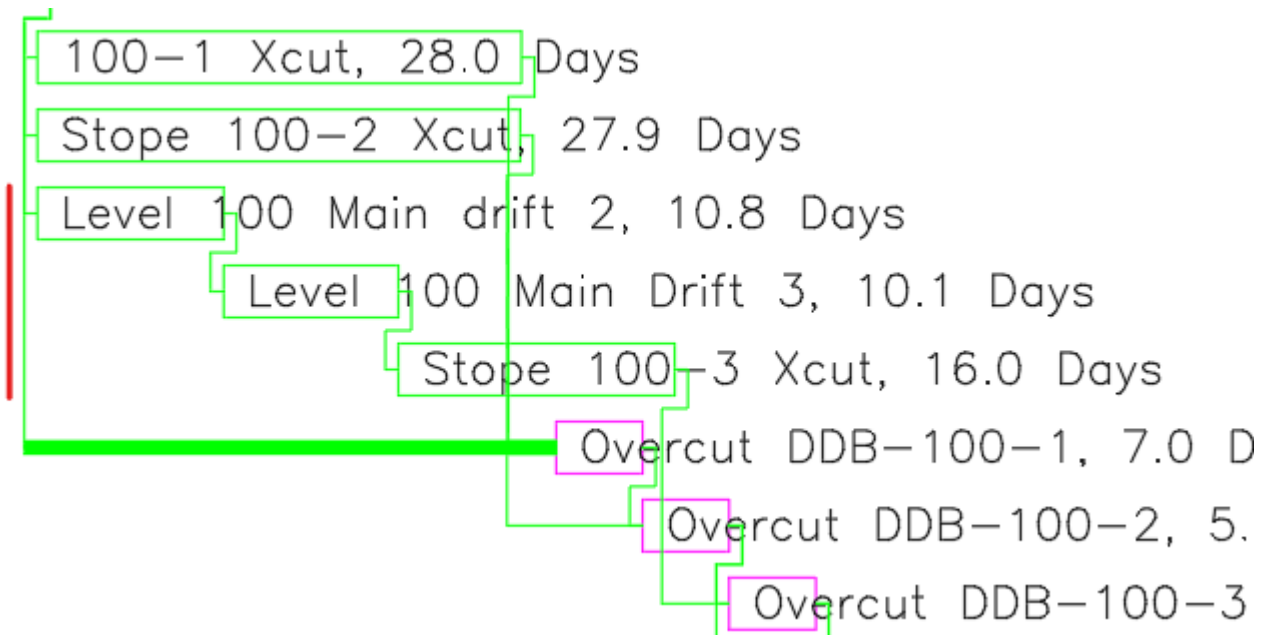
MPLR – Reports

A new option was added to the Report function. When multiple items of the same type are inserted into a Gantt chart, you can join them to make a single item, simplifying the visualization of the project. A toggle was added into the chart creation to use this feature or not. Here is the previous look of the dialog and the fresh look with the toggle added highlighted:

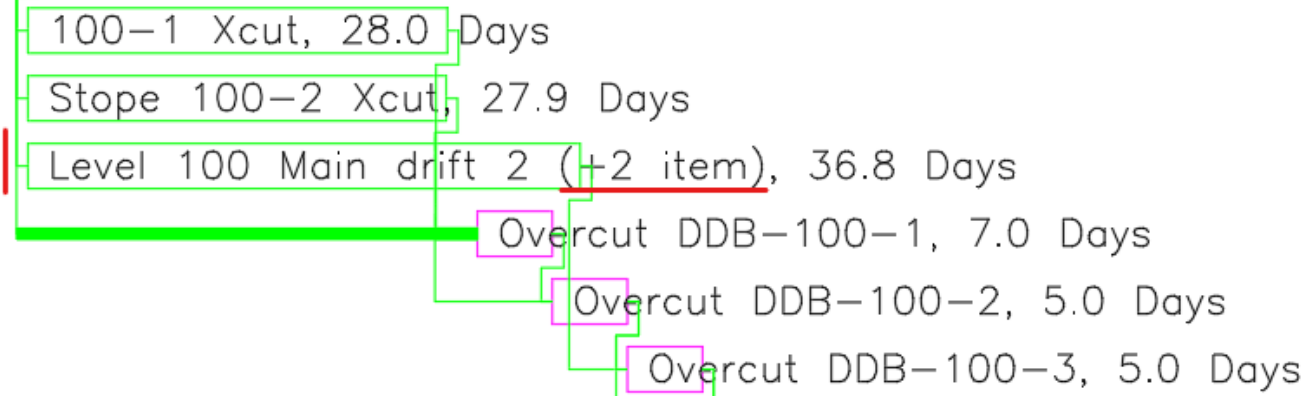


is now ->

As an example, the chart can go from this:



To this:



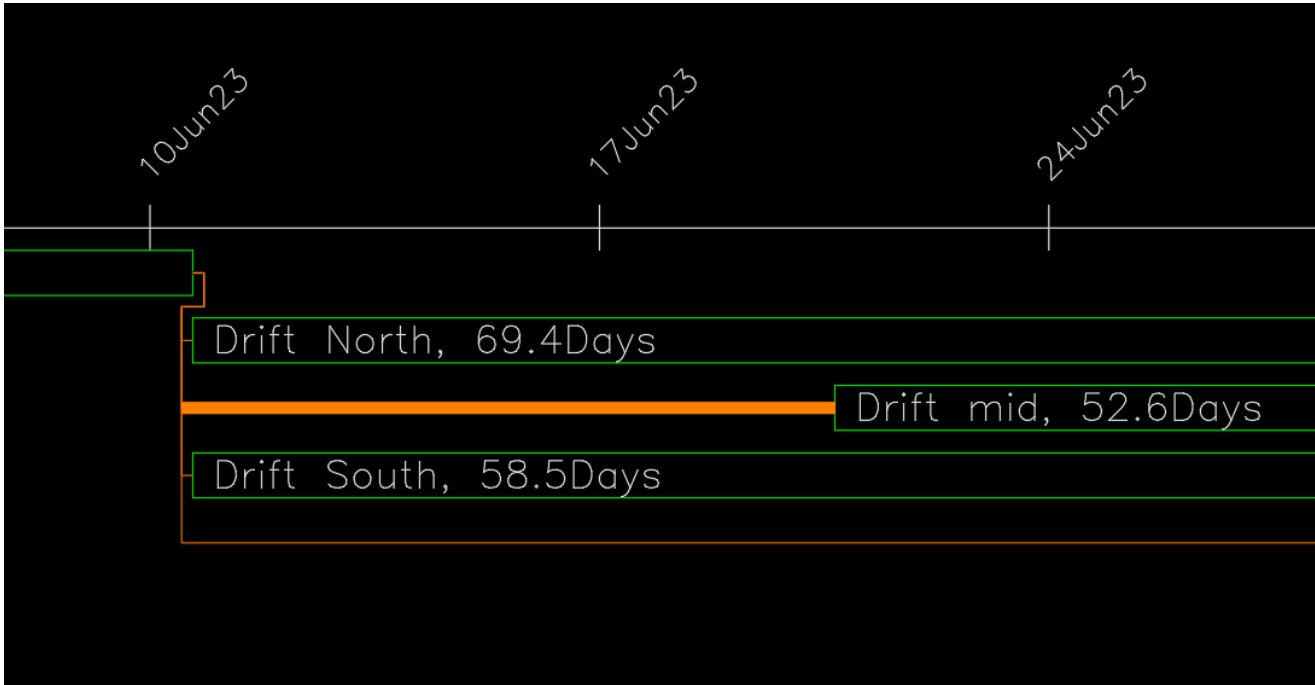
To be joined, the tasks must be of the same type and only have 1 predecessor. Duration, tonnage, progress and grades will be computed for the joined task.

Improvements

Module: Mine Planning

MPLR – Reports

The delay of objects is now visible in the Gantt charts



Rock Mechanics

RKMRR/ RKMQ – RMR and Q value

It is now possible to add a date to RMR and Q blocks. If the user is not setting any date, the actual date will be used. The date is added directly to the block as an attribute. The date format is the same as the one the user is setting in Promine options. The bottom part of both forms has also been reorganized.

1* Rock resistance values			
Uniaxial compressive strength (Mpa)	Index of punctual test (Mpa)	Factor A1	
> 250	> 10	15	<input type="radio"/>
100 - 250	4 - 10	12	<input type="radio"/>
50 - 100	2 - 4	7	<input type="radio"/>
25 - 50	1 - 2	4	<input type="radio"/>
5 - 25	n/a	2	<input type="radio"/>
1 - 5	n/a	1	<input type="radio"/>

FACTOR	RANGE
A1	0

Block location

X 0.000
 Y 0.000
 Z 0.000

Enter value directly

- Create hatch
- Create surface
- Insert table

Insertion date

Wednesday, May 10, 2023

Destination layer

0

Select

Ok

Cancel

MI Q-system

1. Rock quality design (RQD) 2. Diaclasion index (Jn) 3. Roughness index of discontinuities (Jr) 4. Fracture alteration index (Ja) 5. Reduction factor due to the presence

1. Rock quality design (RQD)

Total sample length (cm)	Sample piece length (> 10cm)	RQD %

Compute

Classification

0 - 25	25 - 50	50 - 75	75 - 90	90 - 100
Very bad	Bad	Regular	Good	Excellent

Block location

X 0.000
Y 0.000
Z 0.000

Select

Enter value directly

Insertion date Wednesday, May 10, 2023

Destination layer 0

Create hatch
 Create surface
 Insert table

Ok Cancel